

# The Brighton

PLAN 62940



ELEVATION D



ELEVATION C



ELEVATION B



ELEVATION A



## HOME FEATURES

4



3



3



2,940



Study | Dining Room | Covered Patio | Walk - In Closets | Tandem 3 Car Garage



# The Brighton

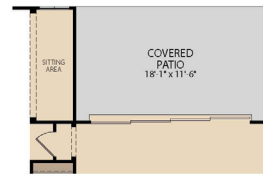
PLAN 62940



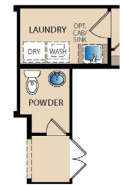
A QUALICO Company



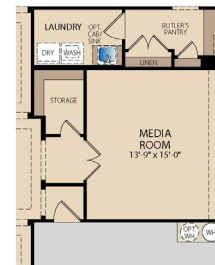
FLOOR PLAN



OPT. MULTI-SLIDE AT PATIO W/ MASTER SITTING



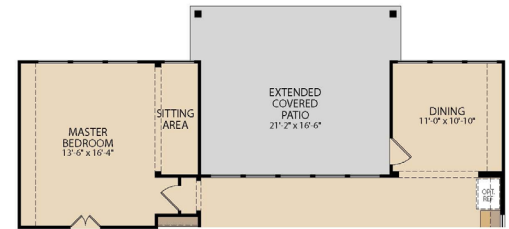
OPT. POWDER W/MEDIA ROOM



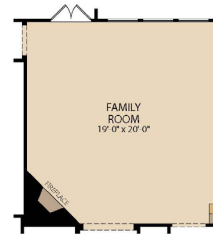
OPT. MEDIA ROOM



OPT. TRAY CEILING AT MASTER BEDROOM



OPT. EXTENDED COVERED PATIO W/ MASTER SITTING



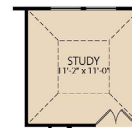
OPT. FIREPLACE AT FAMILY ROOM



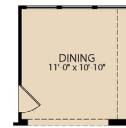
OPT. VAULT CEILING AT GAME ROOM



OPT. 8' FRONT DOOR



OPT. TRAY CEILING AT STUDY



OPT. WINDOWS AT DINING



OPT. TRAY CEILING AT DINING



OPT. WINDOWS AT MASTER BEDROOM



OPT. DELUXE KITCHEN



OPT. LUXURY MASTER BATH

Updated 11/2022 © Pacesetter Homes, LLC. Unauthorized use of this plan is a violation of the U.S. Copyright Act Title 17 of the U.S. Code. Floorplans and Elevations are subject to change without notice. The Floorplans and Elevations represented are artistic concepts. The actual construction plan may differ in features, dimensions, and colors offered. All square footage is approximate living area. Your Pacesetter representative will be happy to provide specific and current details. Elevations shown with optional stone and metal roof.